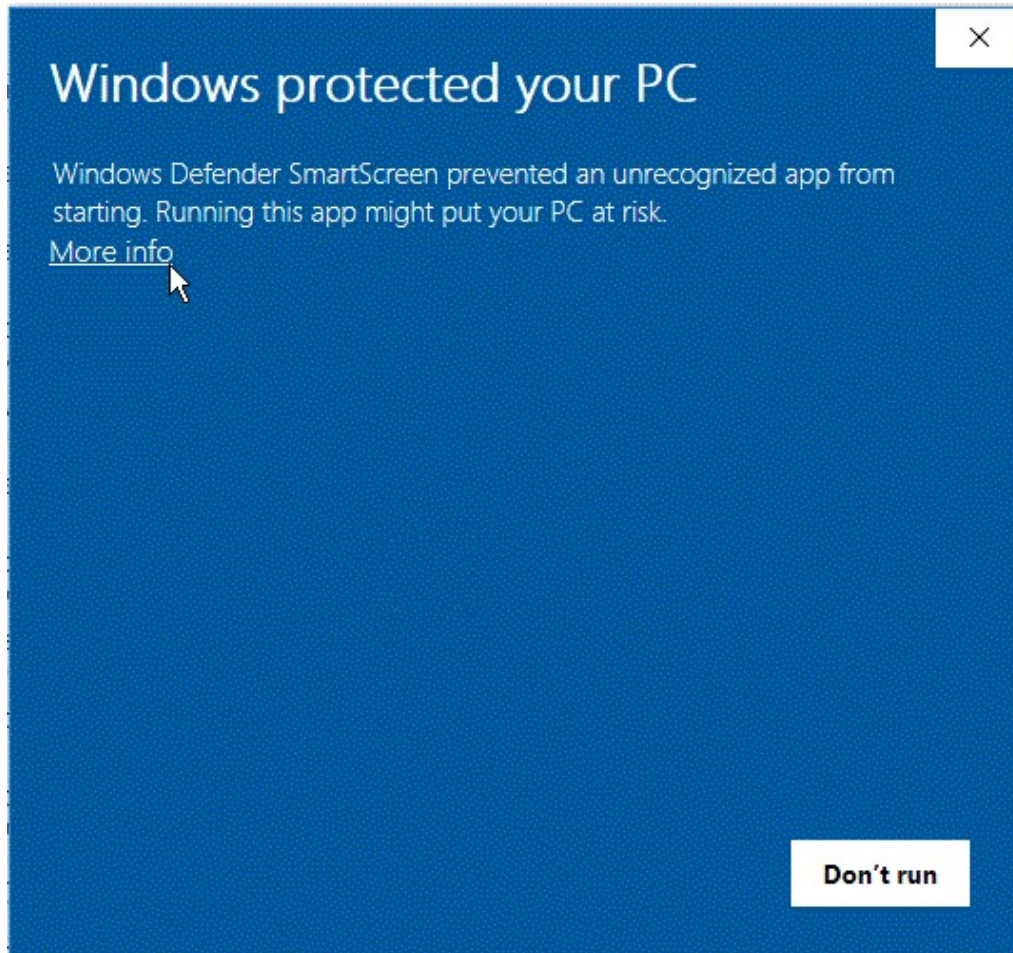


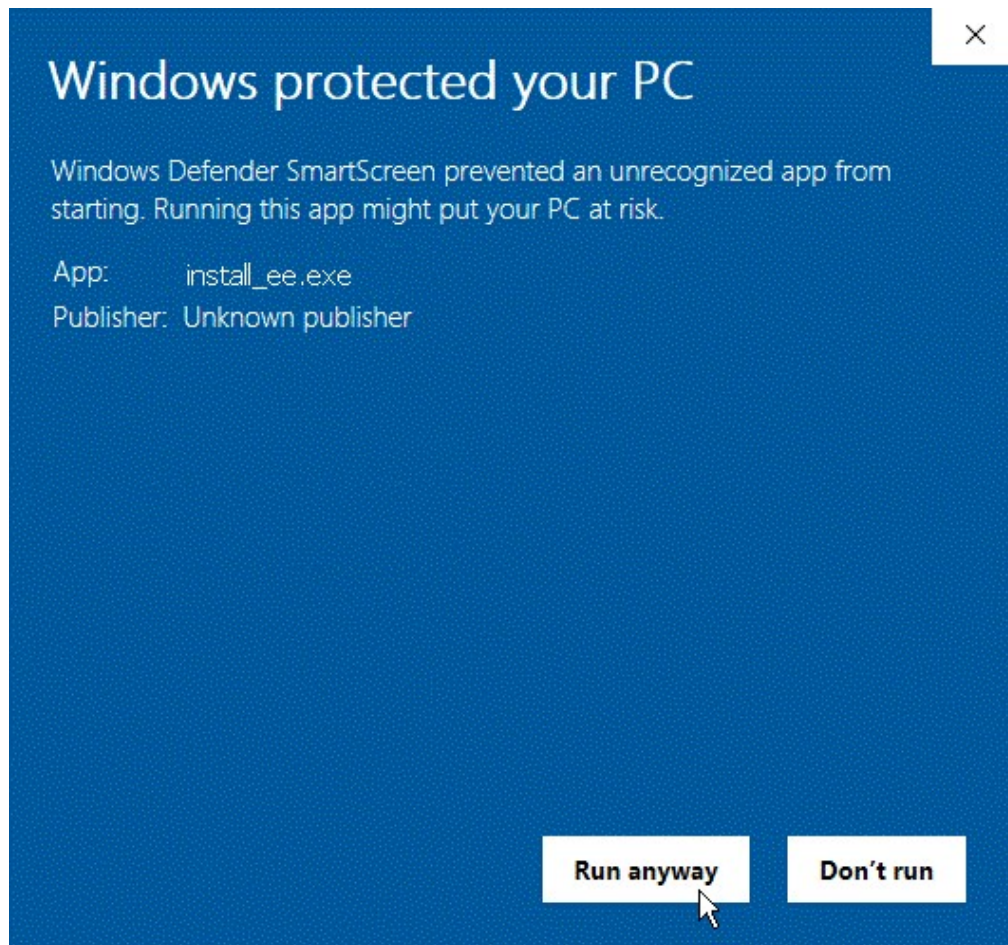
Installing New ECM Definition Files

To install your new ECM Definition File(s), double click on the installation program that you downloaded to begin the installation.

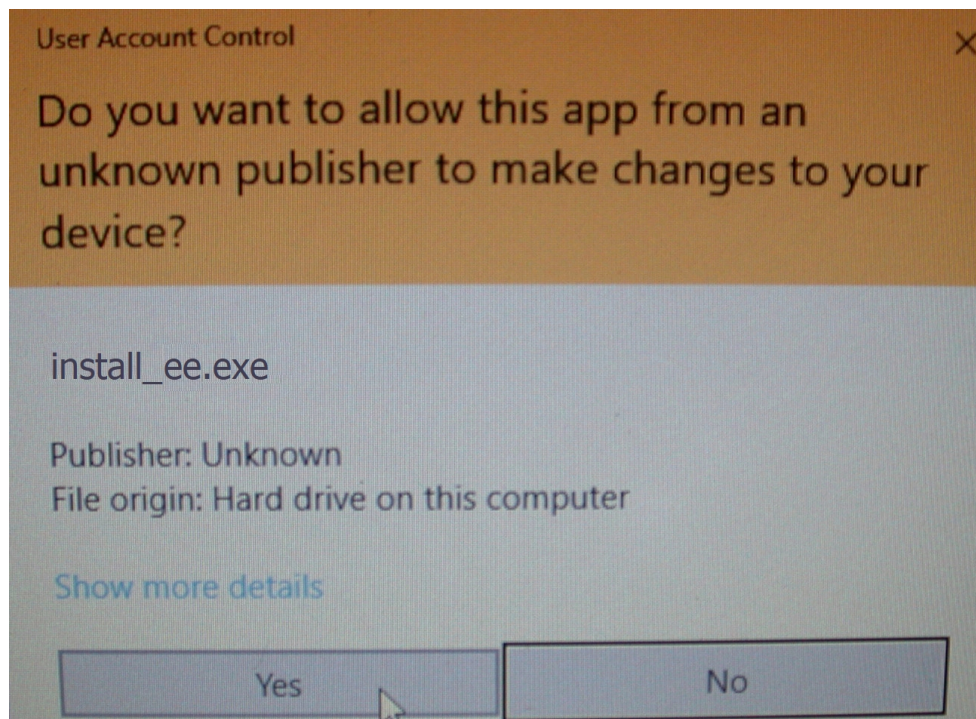
If you receive the following message:



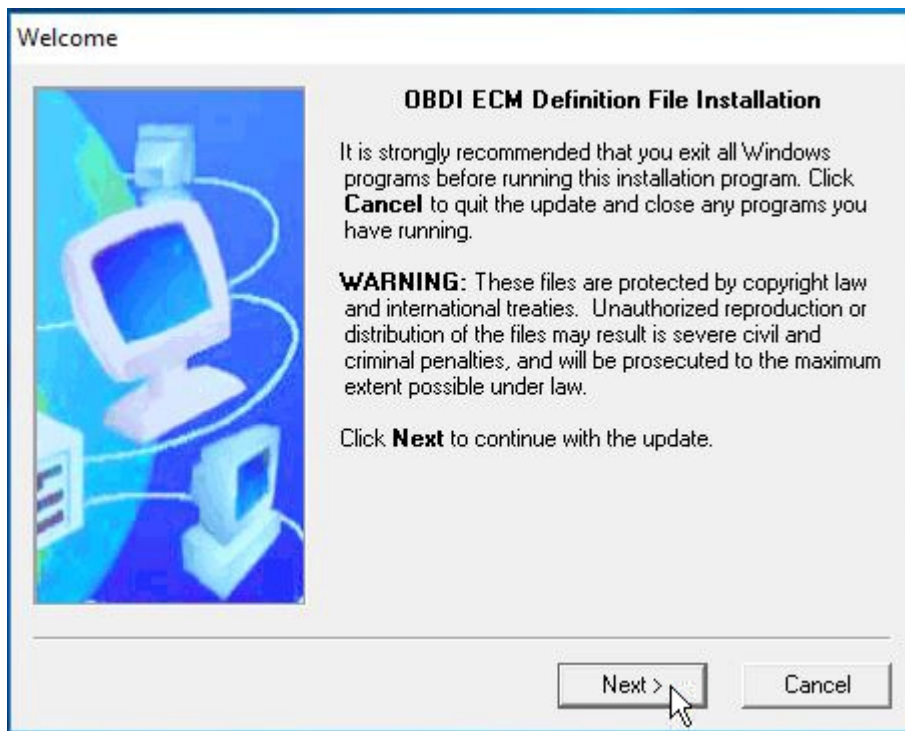
Click on 'More info' and then click on the 'Run anyway' button to continue the installation.



If you then receive the following UAC message:



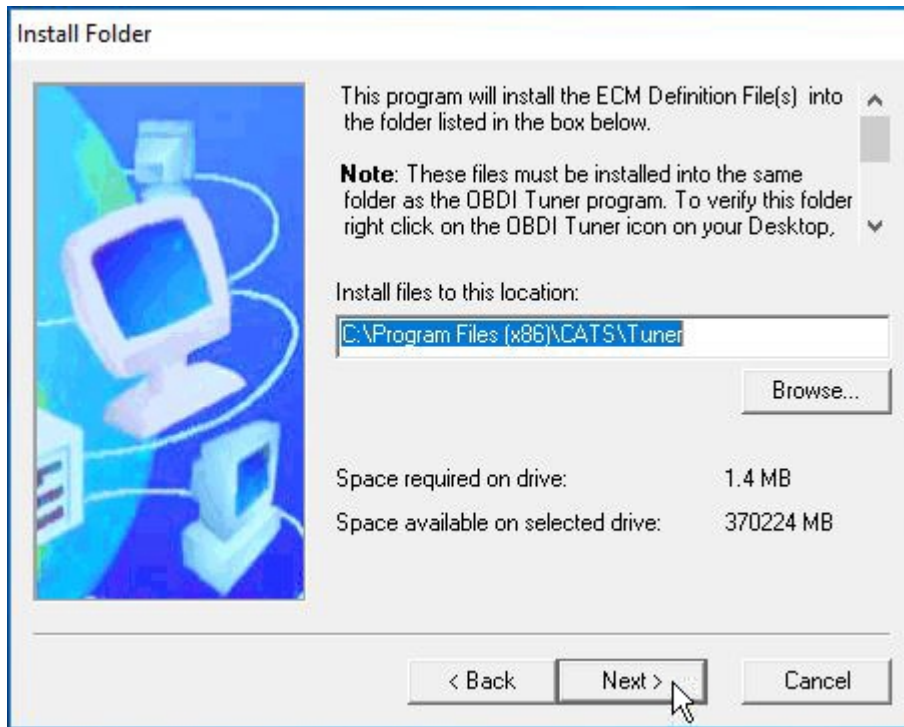
Click of the 'Yes' button to continue. The welcome screen with then be displayed:



Click the 'Next' button to continue. The License Agreement screen will then be displayed.

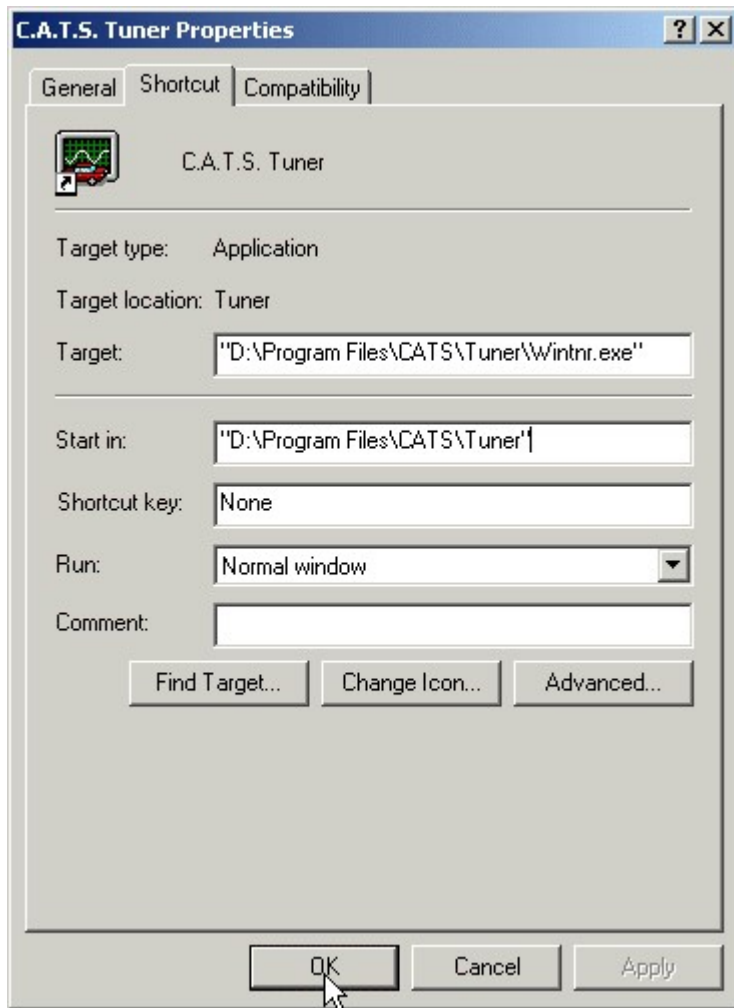


Please review the license agreement and click on the 'Accept' button to continue. The next screen will show the folder into which the ECM Definition Files will be installed.



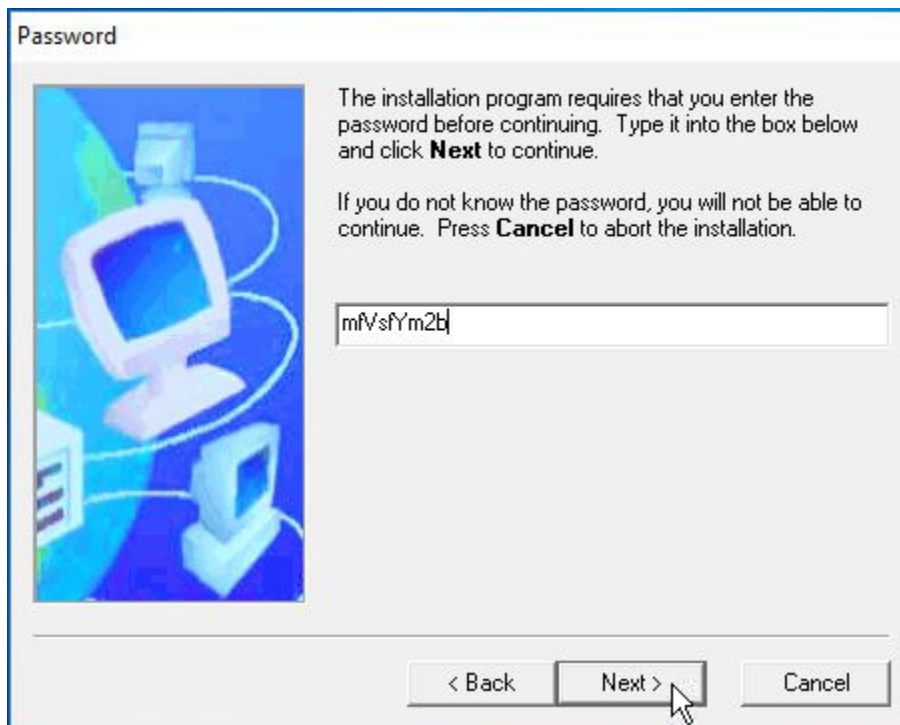
The ECM Definition Files must be installed into the same folder as the Tuner (or RT Tuner) program. By default this is 'C:\Program Files\CATS\Tuner' (or 'C:\Program Files (x86)\CATS\Tuner' on 64-bit Windows PCs).

If you changed the installation folder when you originally installed the Tuner or RT Tuner then edit the folder specified in the 'Install files to this location:' box or click on the 'Browse' button to locate your Tuner folder. To verify the Tuner program folder right click on the Tuner or RT Tuner icon on your Desktop and select 'Properties' from the pop-up menu. This will display the Properties screen:

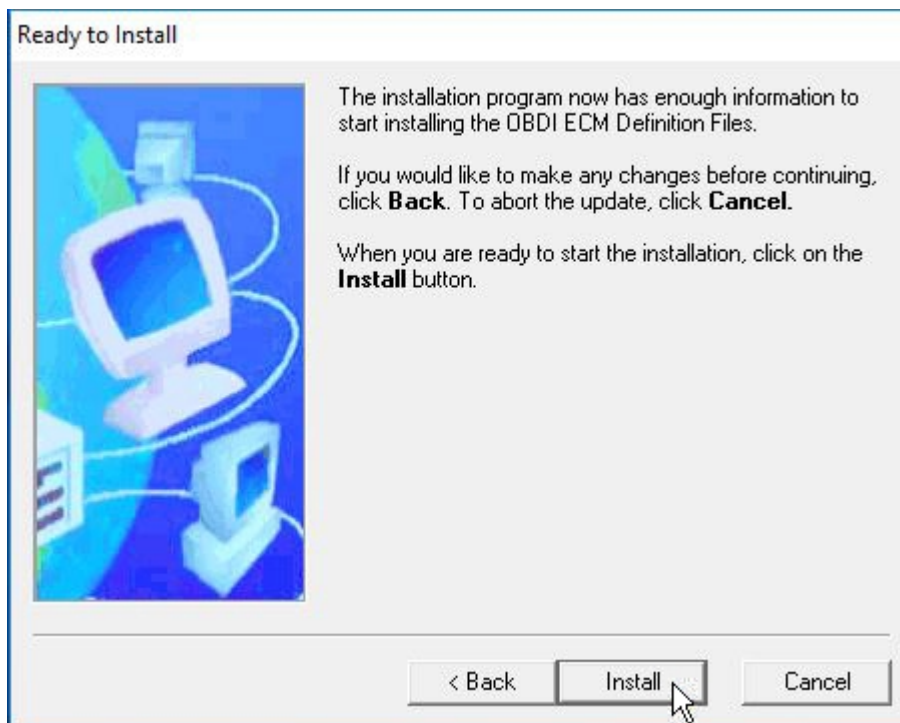


The Tuner folder will be shown in the 'Start in:' box on the Properties screen.

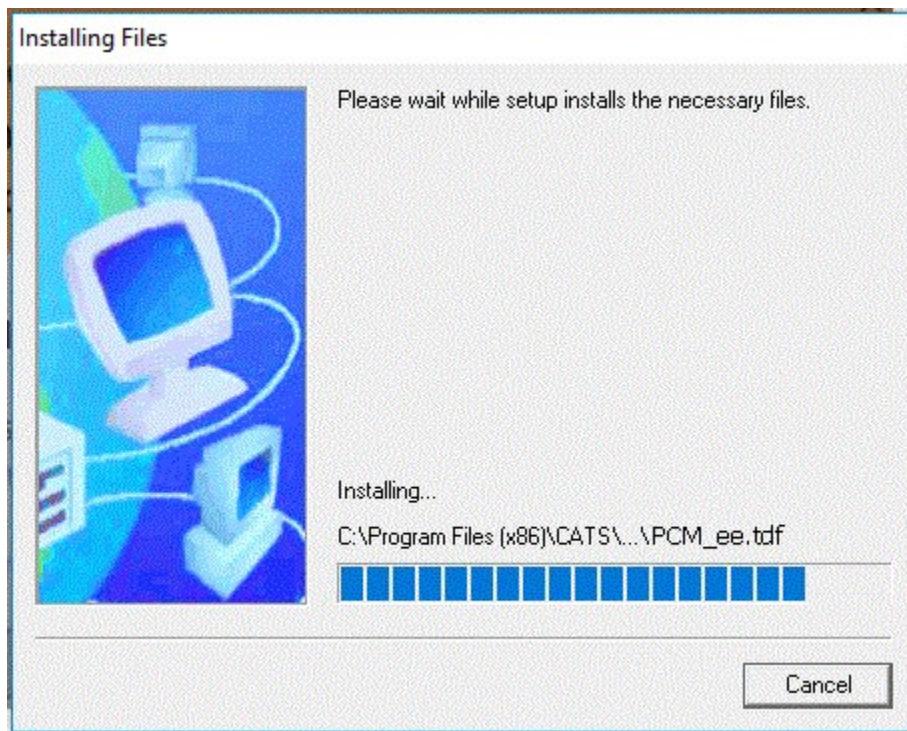
Once the installation folder is correct, click on the 'Next' button to proceed with the installation. The next screen will request an installation password.



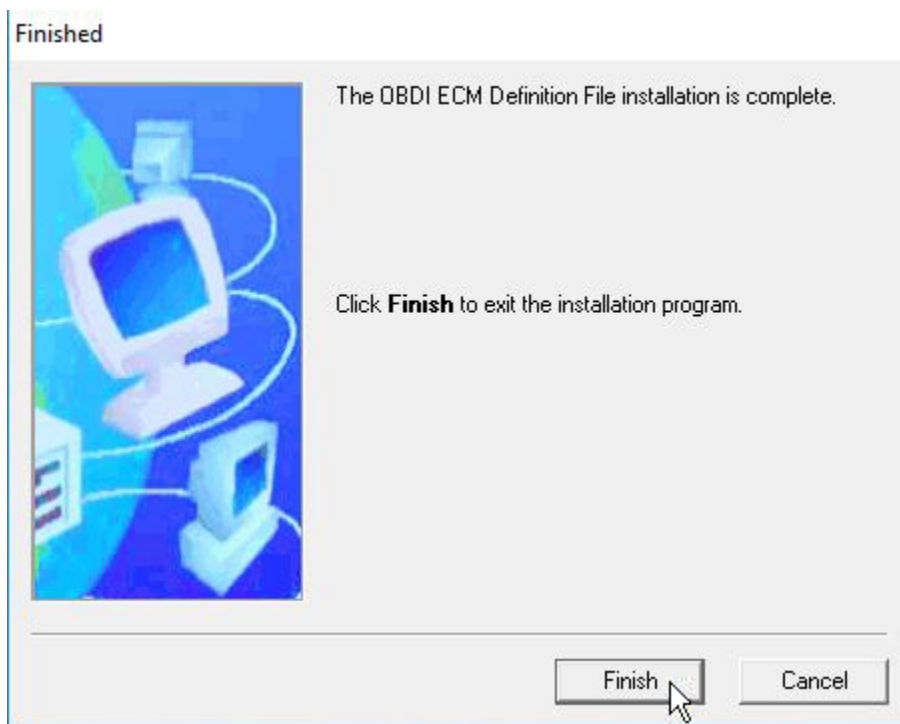
Enter the password you received when you purchased the ECM Definition File and click on the 'Next' button and the Ready to Install screen will be displayed.



Click on the 'Install' button and the installation process will begin.



Once the installation is complete the Finished screen will appear.



Click on the 'Finish' button to complete the installation. Once you have installed your new ECM Definition File(s) you can delete the installation program that you downloaded.

To access your new ECM Definition File(s), run the Tuner or RT Tuner program and click on the 'ECM' menu in the program's toolbar. The drop-down list should now contain your new ECM

Definition File(s). To begin using your new ECM Definition File, click on it in the drop-down ECM list.

