

# C.A.T.S. USB/ALDL Interface Cable Installation

## Table of Contents

Installing the USB/ALDL Interface Cable Drivers .....	1
Troubleshooting .....	11
Changing the Com Port Number.....	12
Update USB/ALDL Cable Driver.....	15
The USB Serial Port does not appear in the Device Manager.....	18
The Tuner program does not recognize the USB/ALDL Interface Cable. ....	18

## Installing the USB/ALDL Interface Cable Drivers

Before using your USB/ALDL Interface cable you need to install the drivers.

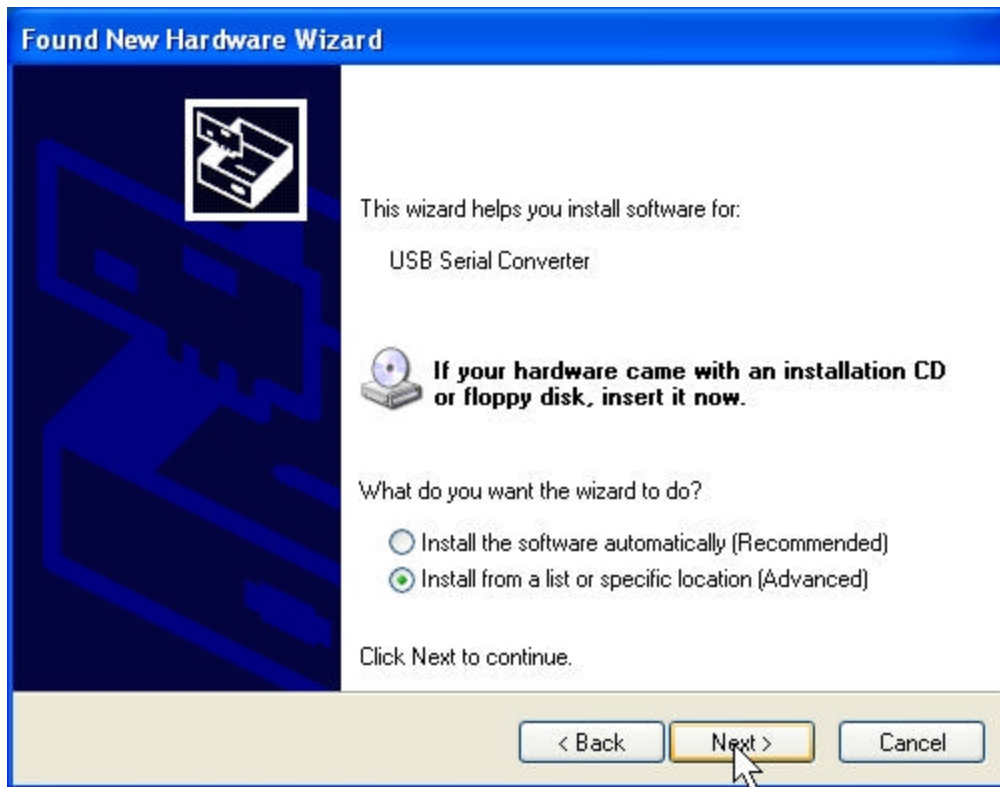
To install these drivers follow the steps below:

Note: The exact installation process will vary somewhat depending on what version of Windows you are running.

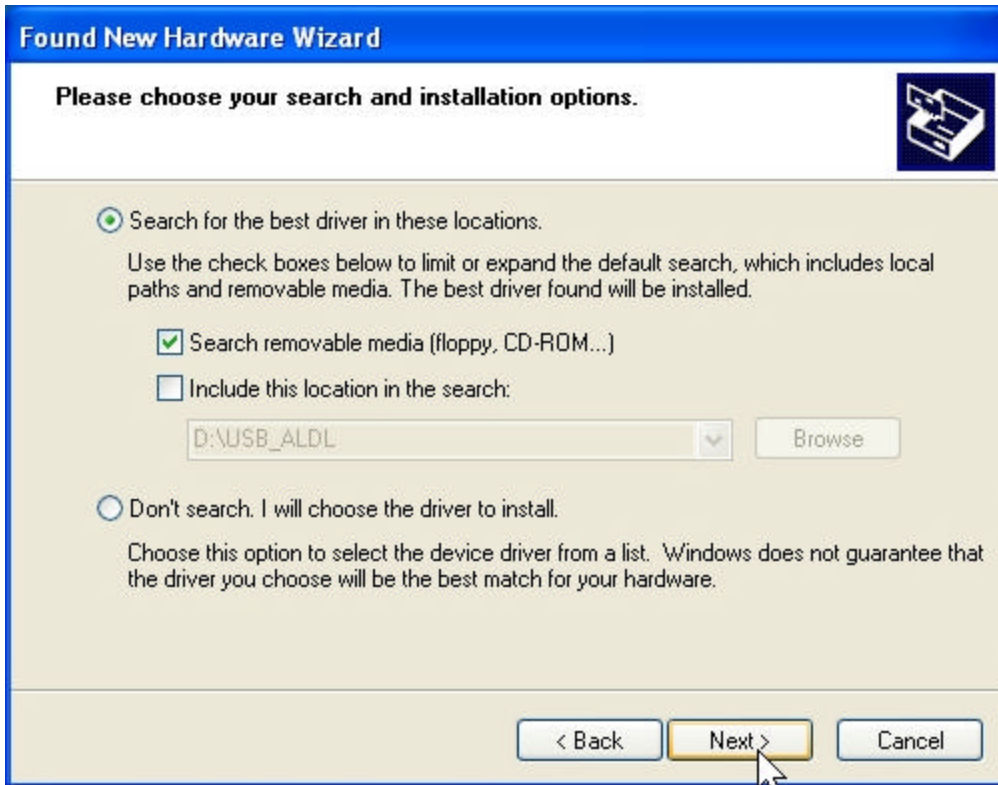
1. Plug the cable into an available USB port on your PC (do not connect to the car yet).
2. Your PC should recognize that new hardware has been added. The 'Found New Hardware Wizard' box should appear. If the 'Found New Hardware Wizard' does not run and Windows automatically installs drivers and you get the 'Found New Hardware' message that says your new hardware is installed and ready to use see the 'Update USB/ALDL Cable Driver' section under 'Troubleshooting' below.



3. Click on the 'No, not this time' option and then click on the 'Next' button.
4. On the next screen click on the 'Install from a list or specific location (Advanced)' option and then click on the 'Next' button.



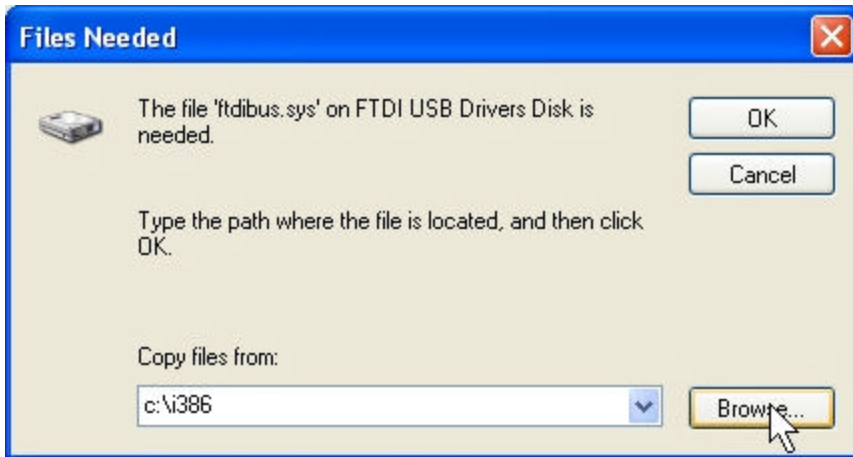
5. Insert your C.A.T.S. Tuner CD. (If the Tuner setup program auto-starts click on the 'Exit' button to quit the setup program.)



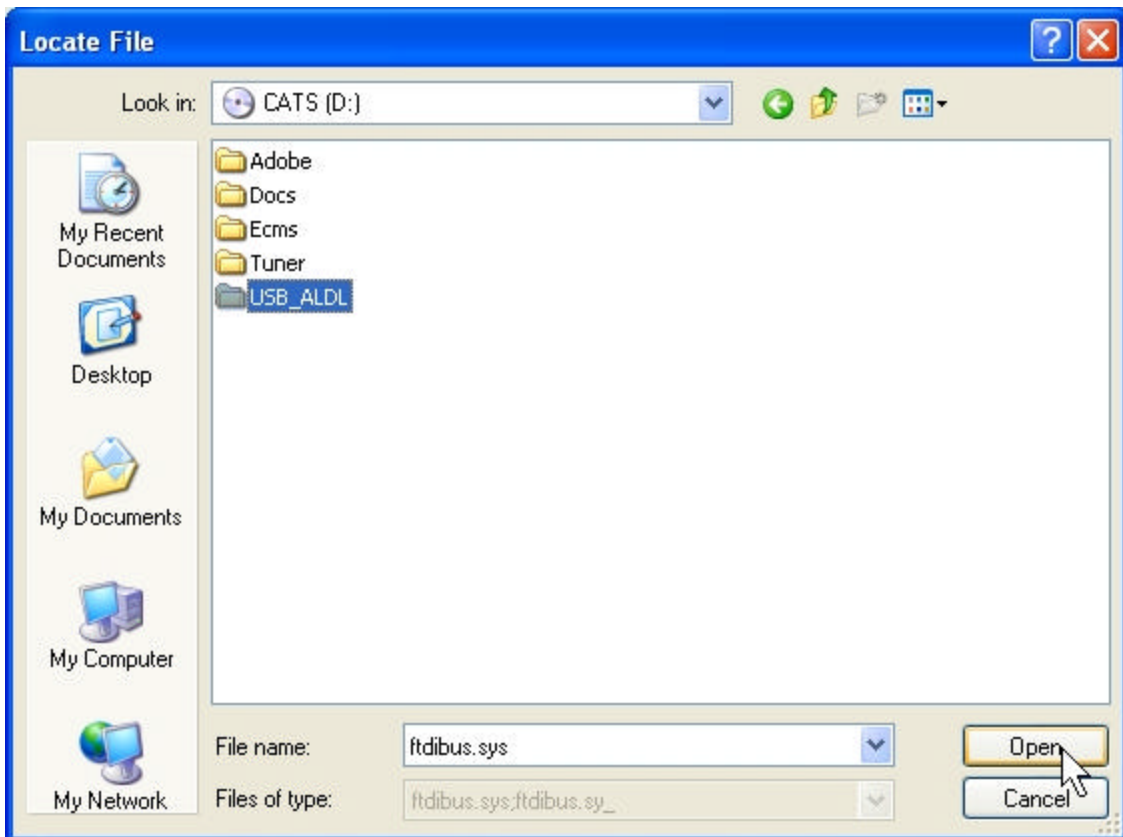
6. On this screen select the 'Search for the best driver in these locations.' Option and check the 'Search removable media (floppy, CD-ROM...)' box and then click 'Next'.
7. If you get the following warning message, click on the 'Continue Anyway' button to proceed.



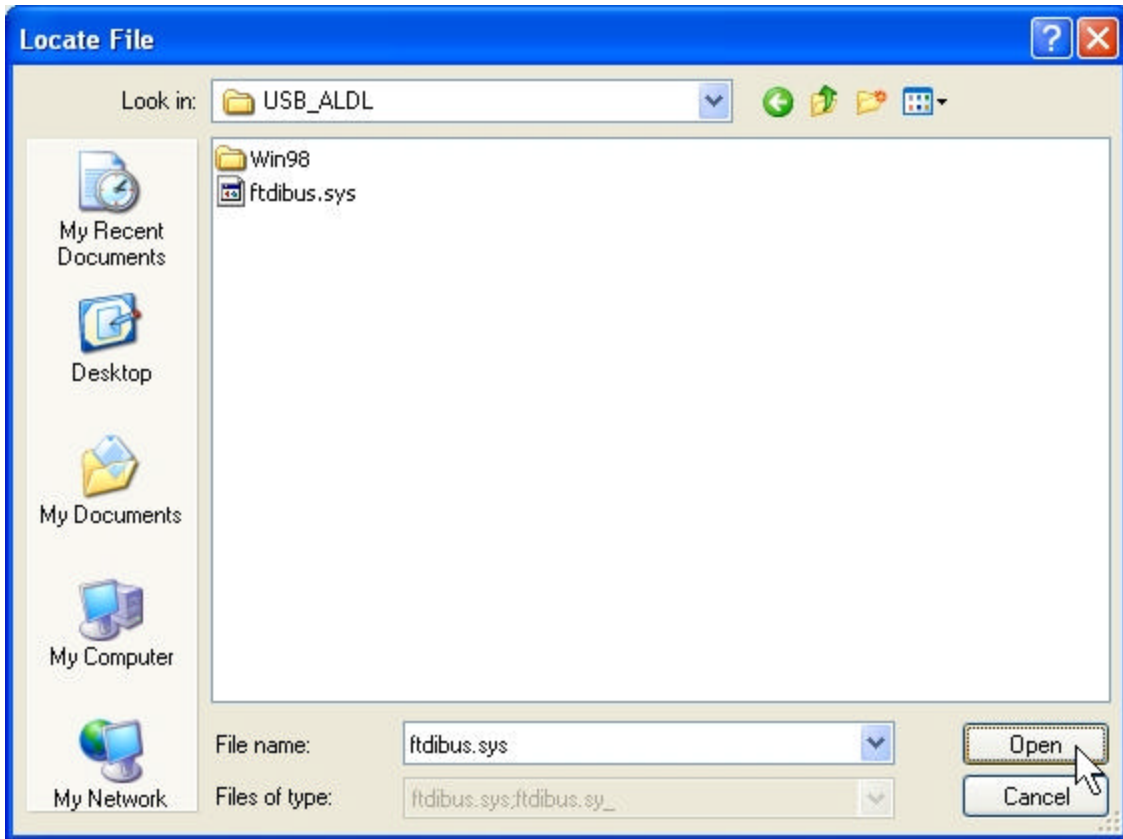
8. Click on the 'Browse' button.



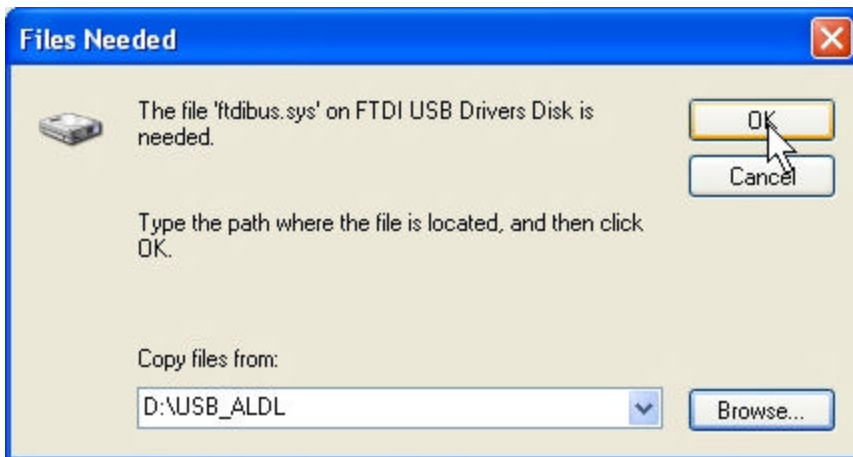
9. Navigate to the CATS CD in your CD ROM drive and click on the USB\_ALDL folder. Then click on the 'Open' button.



10. On the next screen click on the 'Open' button.



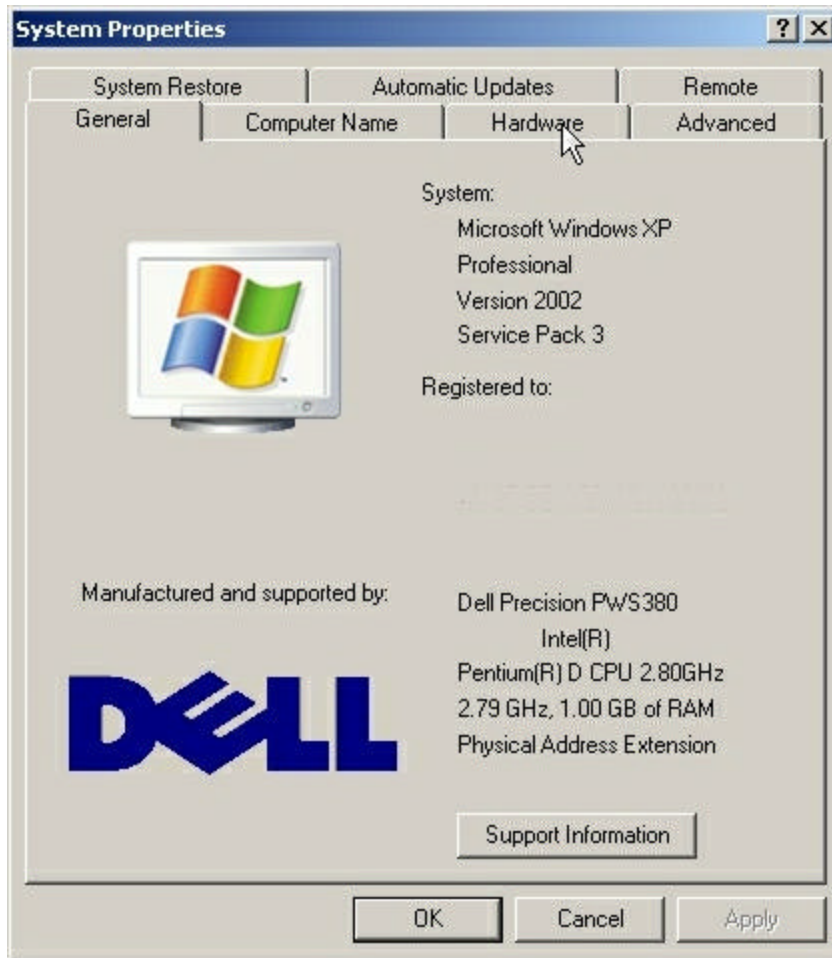
11. The 'Files Needed' screen should now show the D:\USB\_ALDL folder in the 'Copy files from' box. (Note the drive letter of your CD ROM drive may be different.) Click on the 'OK' button.



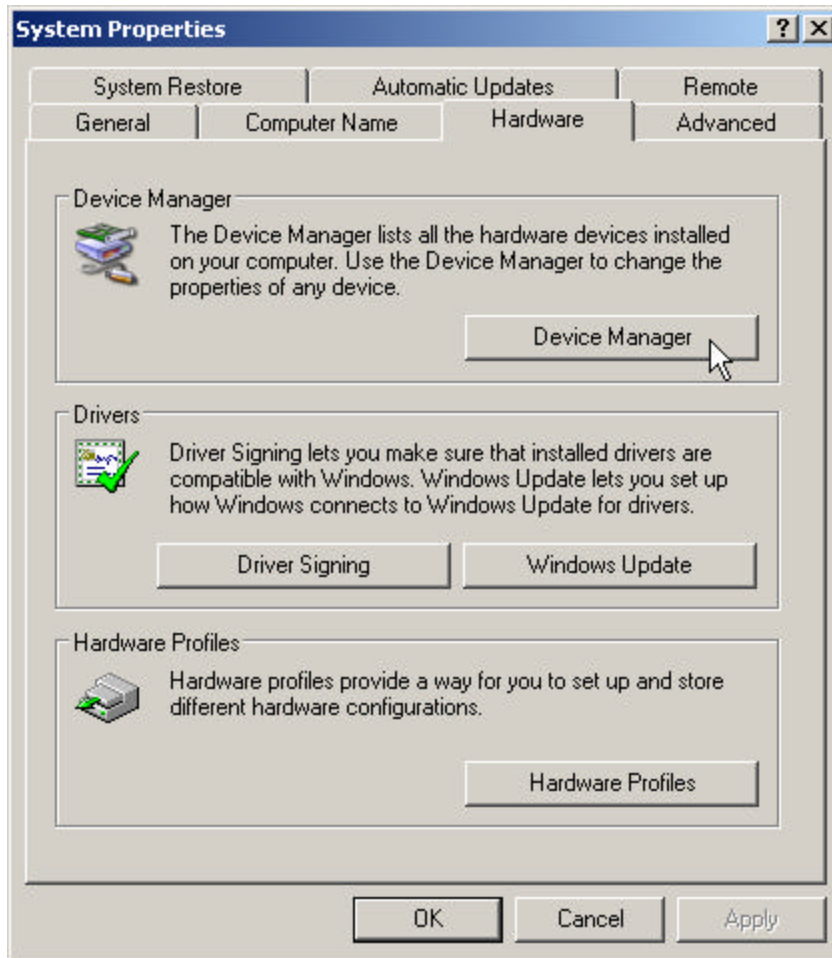
12. The necessary driver files will now be copied to your PC. Once this process is complete you will see the 'Completing the Found New Hardware Wizard' screen. Click on the 'Finish' button to complete this process for the USB Serial Converter.



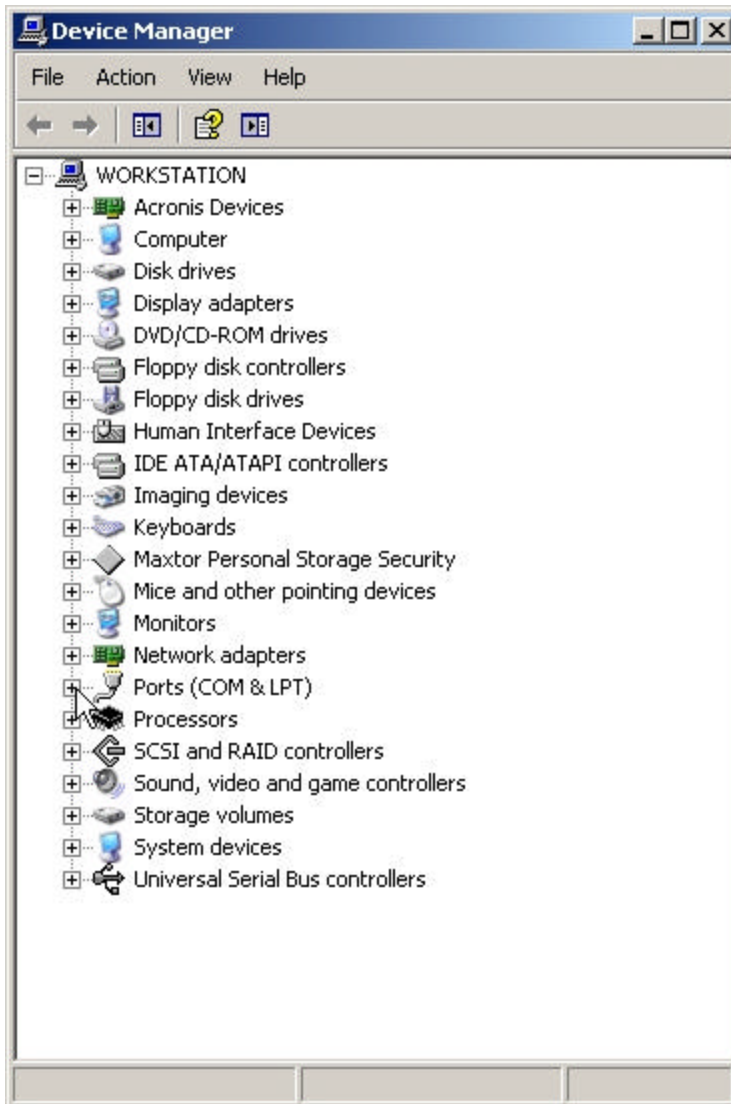
13. The entire Found New Hardware Wizard will be repeated for the USB Port and you should repeat the same steps as before.
14. Unplug the USB/ALDL Interface cable from the PC, reboot your PC and then reconnect the cable.
15. To setup the Tuner program to work with your new cable you'll need to know what com. port was assigned to the USB/ALDL Interface cable. You can do this through the Windows Device Manager. To access the Device Manager, click on the Windows 'Start' button, click on 'Control Panel' and then double click on 'System' from the Control Panel folder.
16. This will display the System Properties screen.



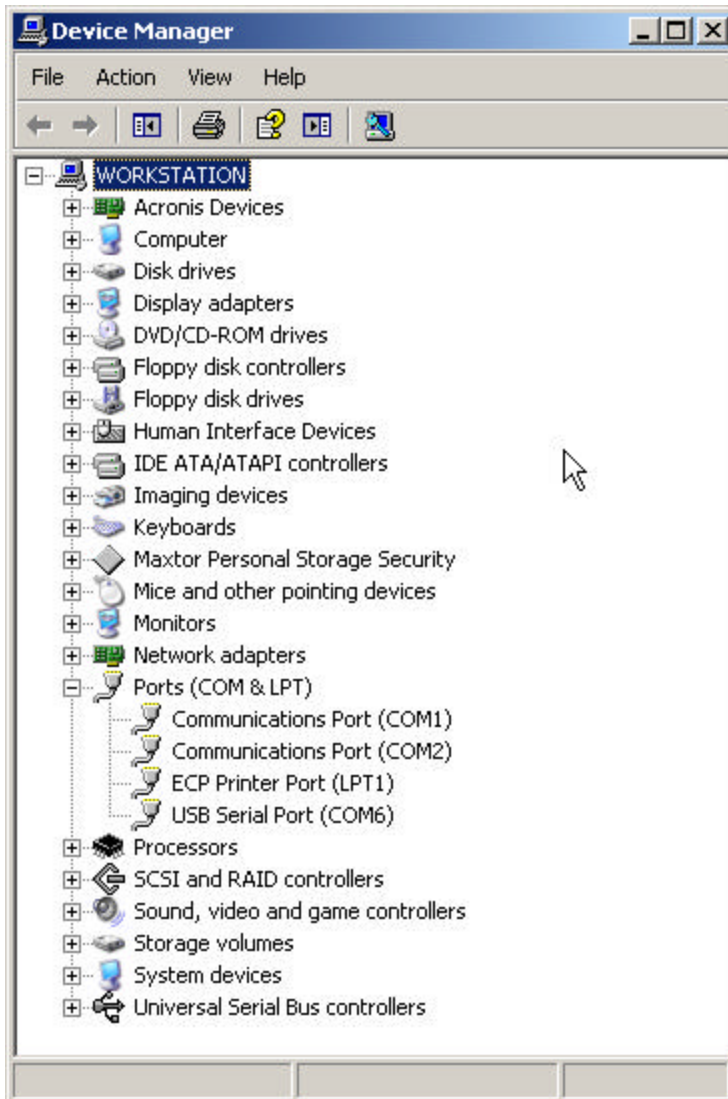
17. Click on the 'Hardware' tab.



18. Click on the 'Device Manager' button.



19. Click on the '+' next to the 'Ports (COM & LPT)' line to display all the ports.



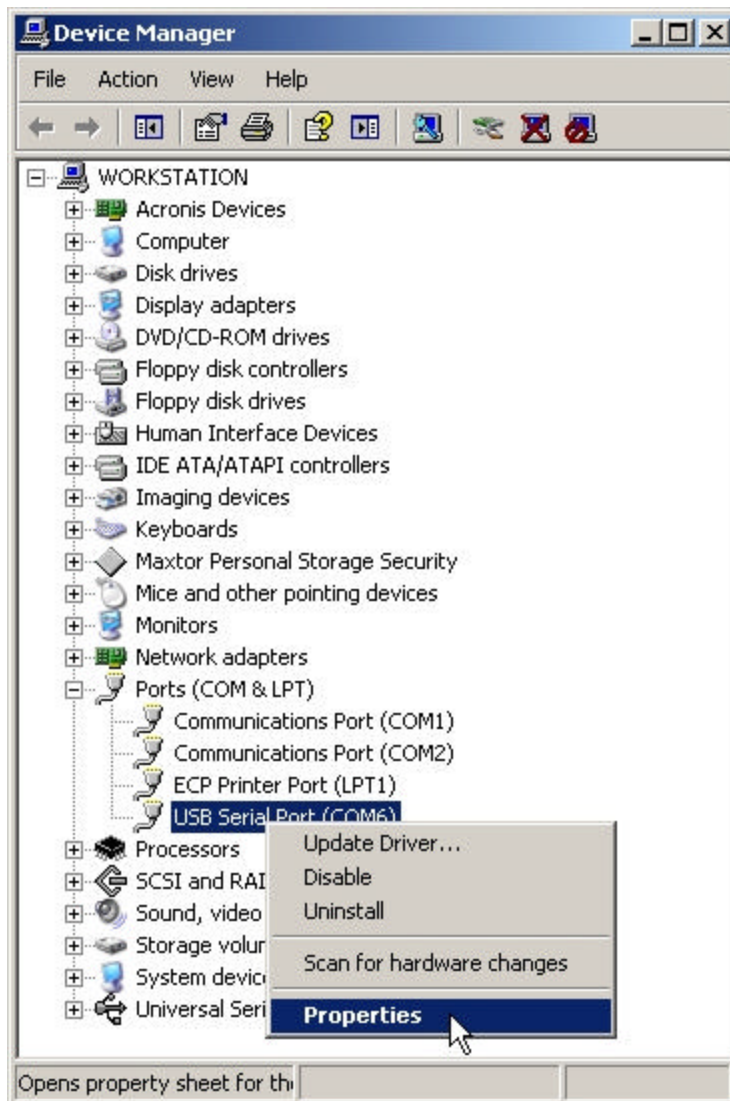
20. Locate the line item under 'Ports' named 'USB Serial Port (COMx)'. 'x' represents the com. port number that was assigned your USB/ALDL Interface cable. In the example pictured com. port 6 was assigned to the cable. Note this number. You will need it to setup the Tuner program or other programs for use with the cable.
21. If a com. port number of 8 or less has been assigned then the installation is complete and you may begin using your cable. If a com. port number larger than 8 was assigned to the cable you will need to change it. See the 'Changing the Com Port Number' section under 'Troubleshooting' below.

## Troubleshooting

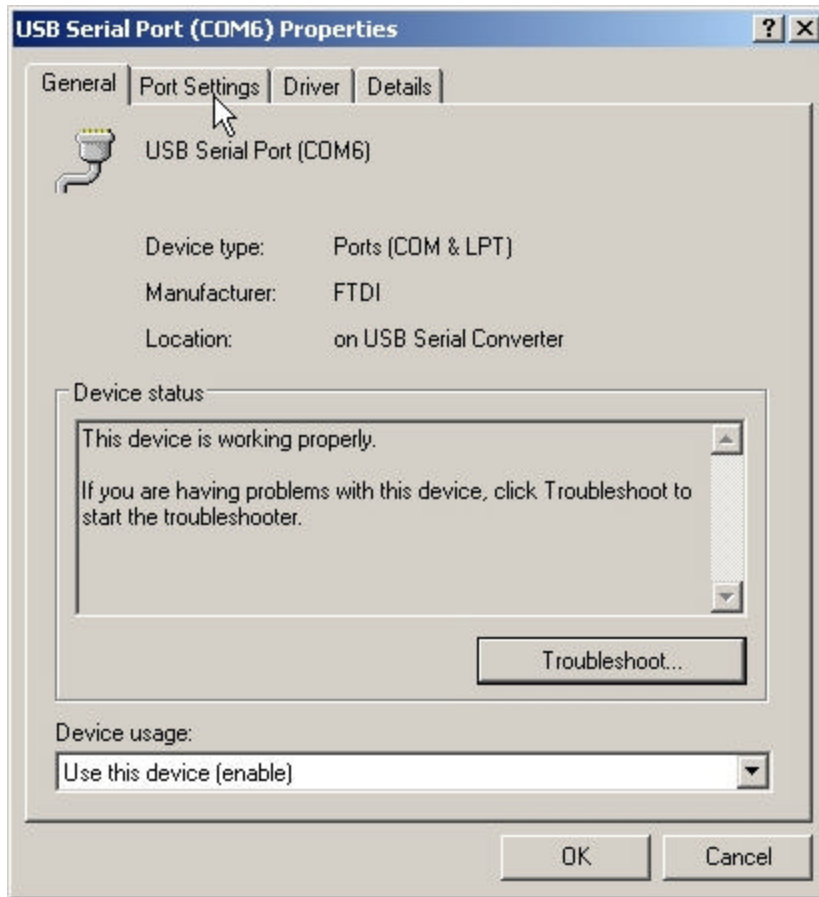
Please note that every USB/ALDL Interface Cable is fully tested before they are shipped so if you are having a problem with the cable it is most likely an installation/setup/connection problem and not a problem with the cable itself.

## ***Changing the Com Port Number***

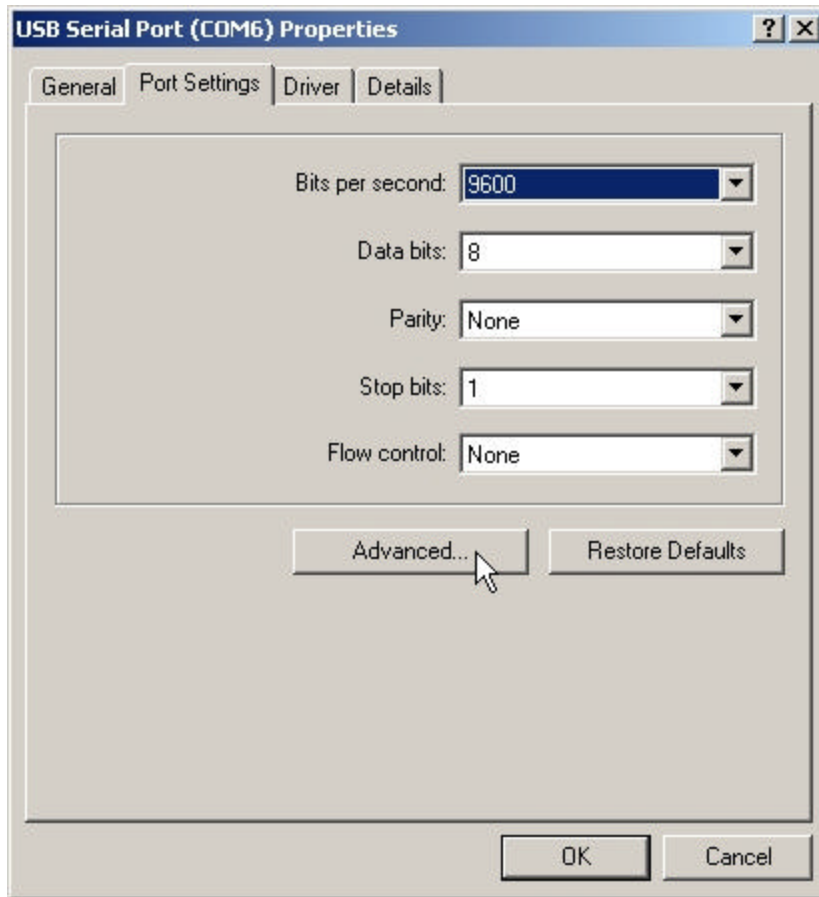
1. The Tuner program recognizes com. port numbers up to 8. Sometimes a com port number greater than 8 is assigned to the cable. If this occurs right click on the 'USB Serial Port (COMx)' item and select 'Properties' from the pop-up menu.



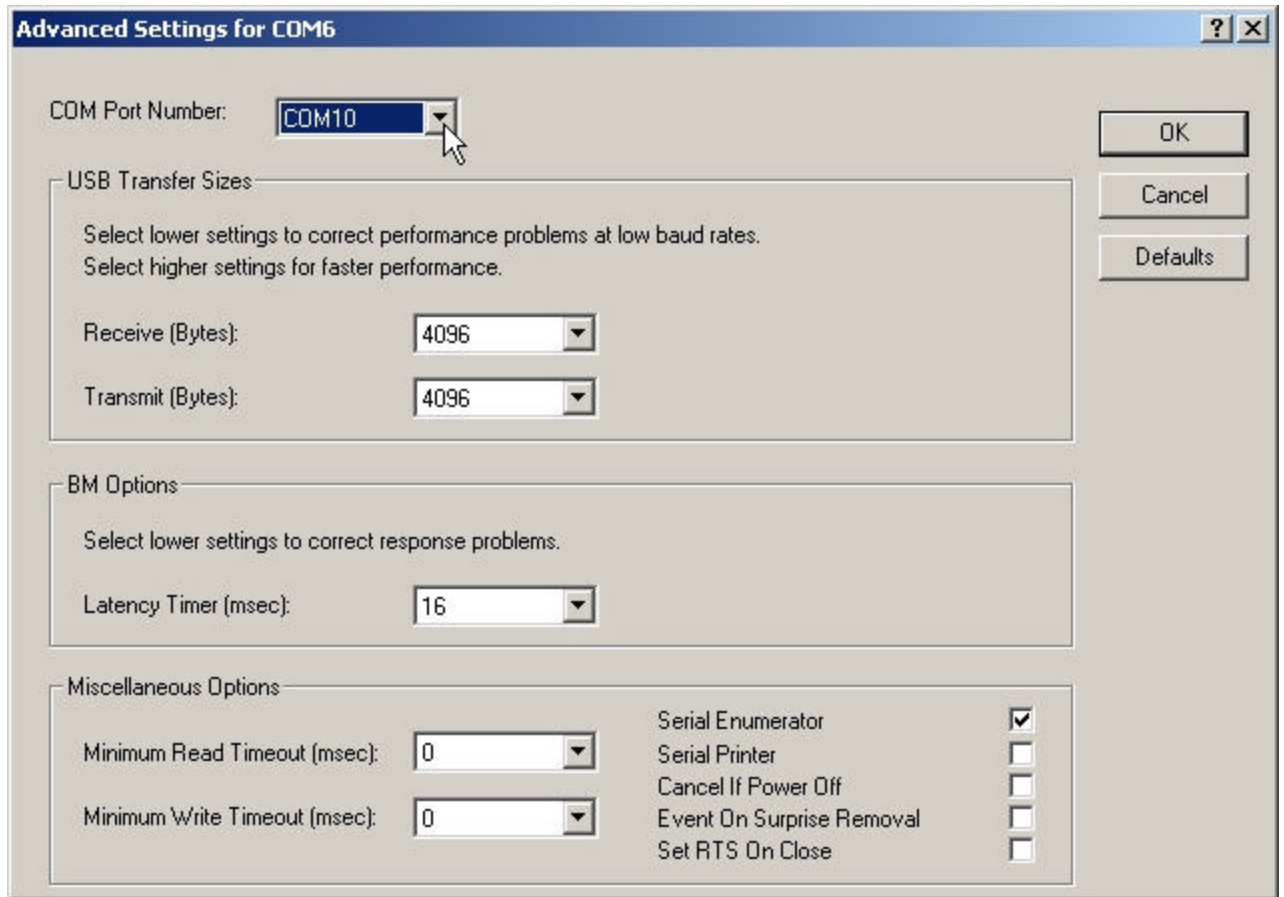
2. This will display the Properties screen for the USB Serial Port.



3. Click on the 'Port Settings' tab.



4. Click on the 'Advanced...' button.

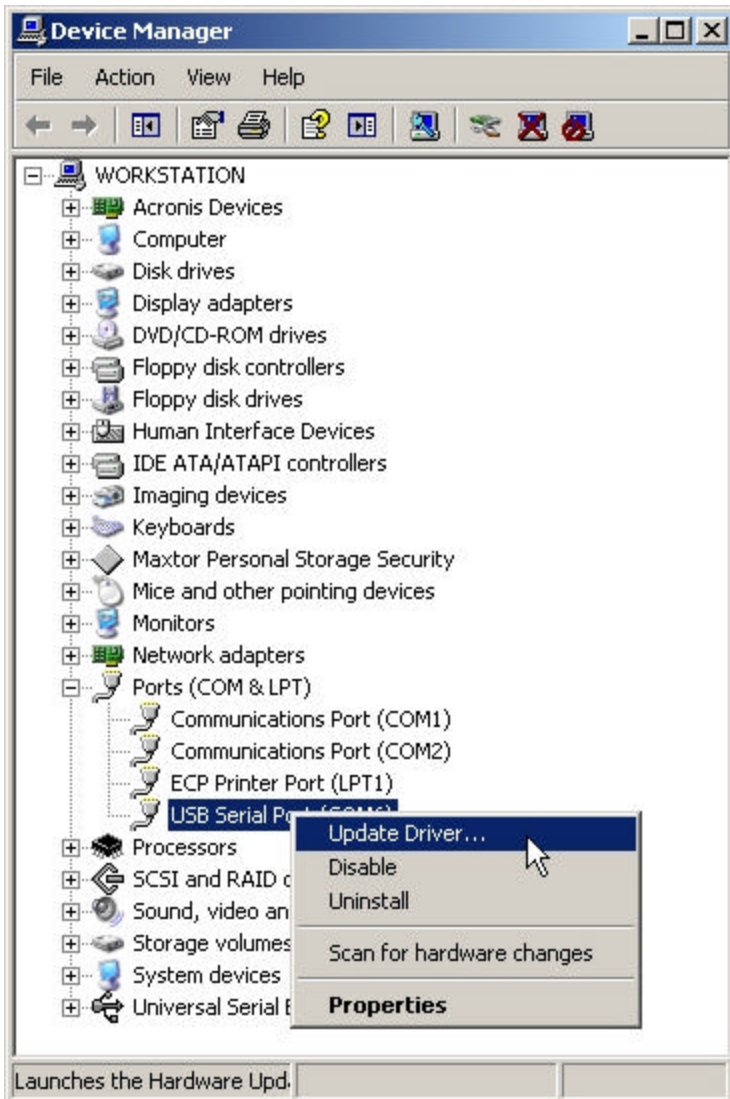


5. Click on the down arrow to the right of the 'COM Port Number' line and select any port number 8 or below from the list of available port numbers. Then click on the 'OK' button. Then click on the 'OK' button on the next screen to complete the change and then close the device manager screen.

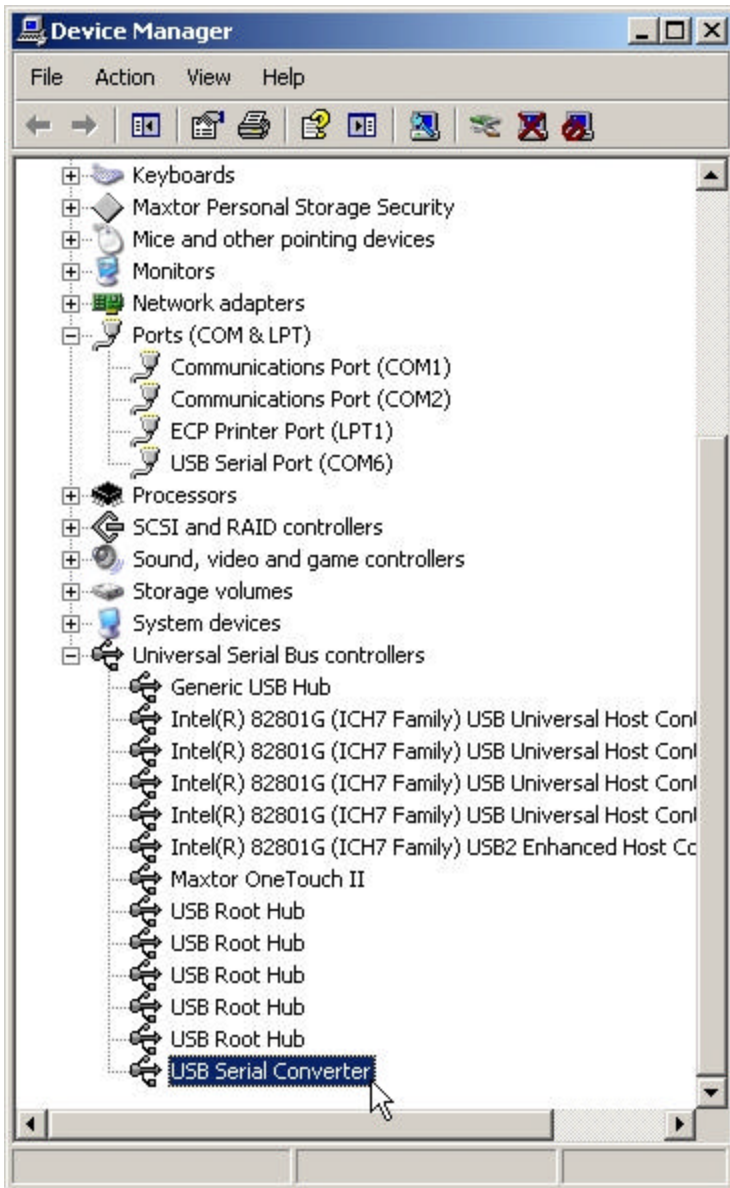
### ***Update USB/ALDL Cable Driver***

If previous versions of these drivers are already installed on your PC, the New Hardware Found Wizard' will not run but Windows will automatically use the previously installed drivers and you will need to update these drivers manually using the Windows Device Manager.

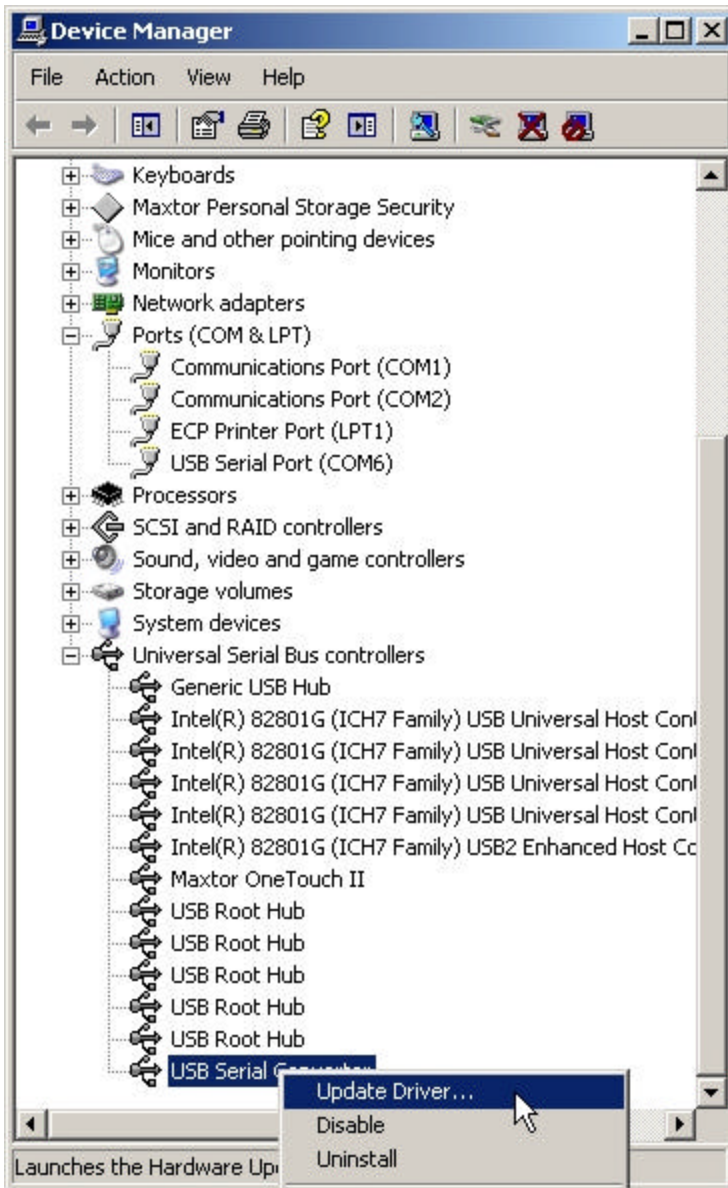
1. Access the Device Manager as described in the Installation section above.
2. From the Device Manager screen right click on the 'USB Serial Port (COMx)' item and select 'Update Driver...' from the pop-up menu.



3. This will start the 'Hardware Update Wizard' and you should follow the same procedure as described above for the 'New Hardware Found Wizard' in the Installation section to complete the update of the USB Serial Port driver.
4. Next click on the '+' next to the 'Universal Serial Bus controllers' line to display all the installed controllers.



5. Locate the 'USB Serial Converter' line and right on it.



6. Select 'Update Driver...' from the pop-up menu to start the 'Hardware Update Wizard' for the USB Serial Converter. Complete this wizard as described above.

***The USB Serial Port does not appear in the Device Manager.***

If the USB Serial Port does not appear in the Device Manager screen under the Ports section then the driver installation process did not complete successfully. Unplug the USB/ALDL cable from the PC and then plug it in again and repeat the installation process.

***The Tuner program does not recognize the USB/ALDL Interface Cable.***

If the com port that was assigned to the USB/ALDL cable does not show up as 'available' on the Com Port Selection screen then either the drivers did not install properly or a com port number greater than 8 was assigned to the cable.

Document Version 1.00  
10/21/09

Computer Automotive Tuning Systems  
14327 Dogwood Lane  
Belle Haven, VA 23306

[www.tunercat.com](http://www.tunercat.com)  
[tc@tunercat.com](mailto:tc@tunercat.com)